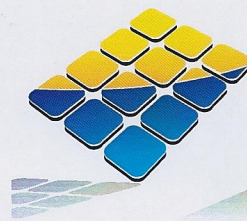


AEROCOMPACT®

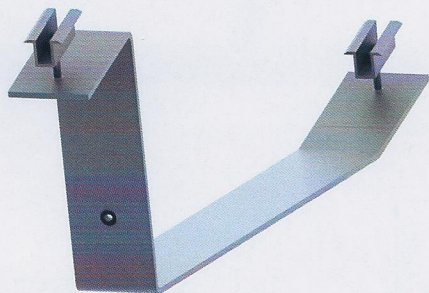
a product of SST Solar USA

... the unbeatable flat-roof solution



Kinetic

SOLAR RACKING AND MOUNTING

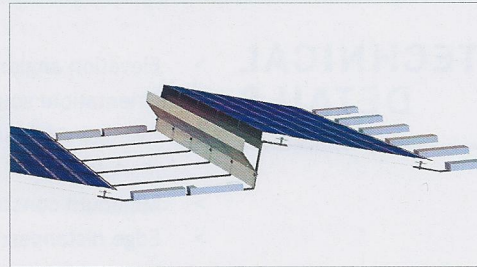
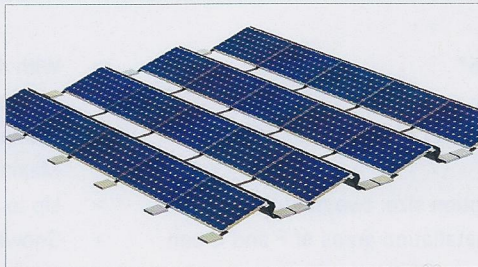
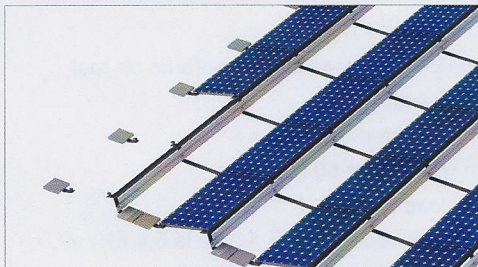
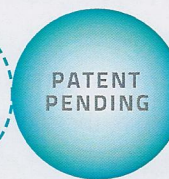


AEROCOMPACT S

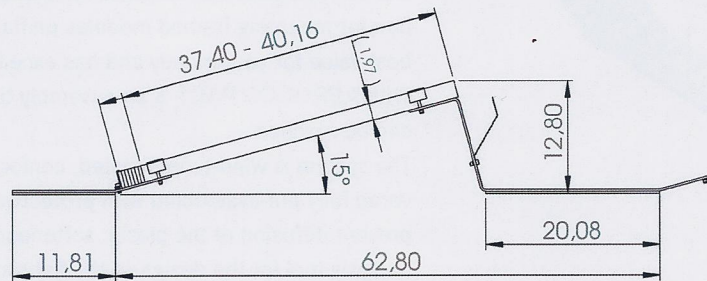
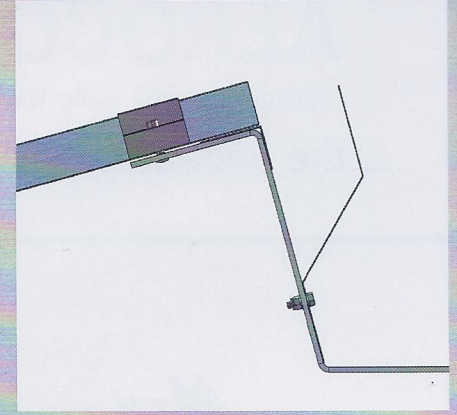
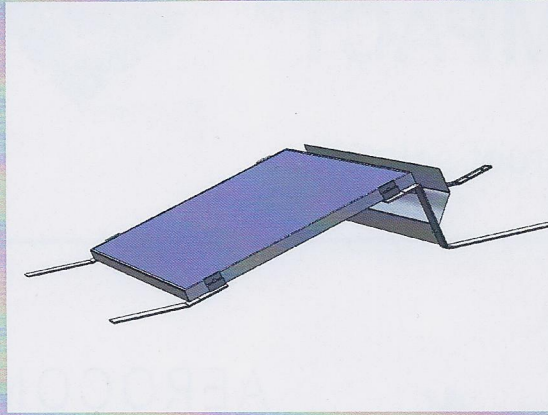
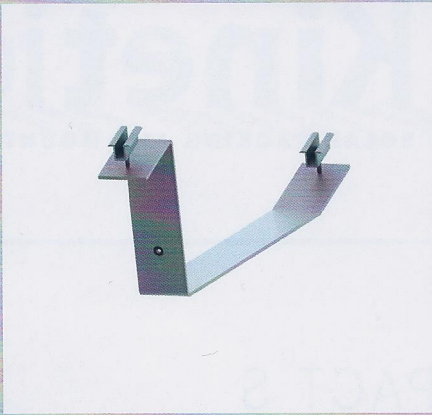
Our **AEROCOMPACT S** (south oriented), is the aerodynamic solution for mounting framed modules on flat roofs. This system offers best value for your money and has excellent installation features. With **AEROCOMPACT S** an assembly time of 10 minutes per kWp can be reached.

The system is wind-tunnel tested, conforms to UL 2703 and is delivered fully pre-assembled with protective matting with a barrier to prevent diffusion of the plastic softener. You will also receive a free analysis tool for the design of the flat roof for accurate ballasting.

AEROCOMPACT is the fastest and least expensive mounting system that is available on the current market. Designed and assembled by SST Solar USA Inc.



TECHNICAL DETAILS AEROCOMPACT S



YOUR BIG ADVANTAGE

- + Best price value available
- + The fastest installation in the industry (1 kWp/10 min., 2 men)
- + Statically optimized system
- + less material = less shipping costs
- + Completely pre-assembled
- + Incl. protection pads with aluminum sheet
- + Optimized wind suction, therefore less ballasting than other systems
- + Optimum water drainage
- + Suitable for roof edge zones
- + Complimentary software for module layouts
- + ETL certified, conforms to UL 2703
- + Wind tunnel tested for up to 150 mph
- + Patent pending
- + Without roof penetration
- + Optimum module ventilation

TECHNICAL DETAILS

- > Elevation angle: 15°
- > Orientation: south
- > Average additional load of 2,1 lbs per sqf incl. module
- > Minimum construction size: two modules
- > Edge distances: installation areas of F and G can be used (please use software tool)
- > Dimensions for framed modules are (37.4 - 40.1) inch x (64.1 - 66) inch
- > With 44 lbs per sqf, snowload downforce on roof equals 0,15N/mm²
- > Maximum permitted roof slope 4°
- > Maximum roof height 60 ft
- > Up to wind load zone 4
- > Snowload for Aerocompact S Alpine is 5,4 KN/m², for Aerocompact Standard 2,4 KN/m²
- > Proof of static load capacity of the roof is to be provided by customer

